



Cherry Street Surgery



Tang Hall Lane Surgery



Heworth Green Surgery



Park View Surgery



Fulford Surgery



Priory Medical Centre



Victoria Way Surgery



Lavender Grove Surgery



Rawcliffe Surgery

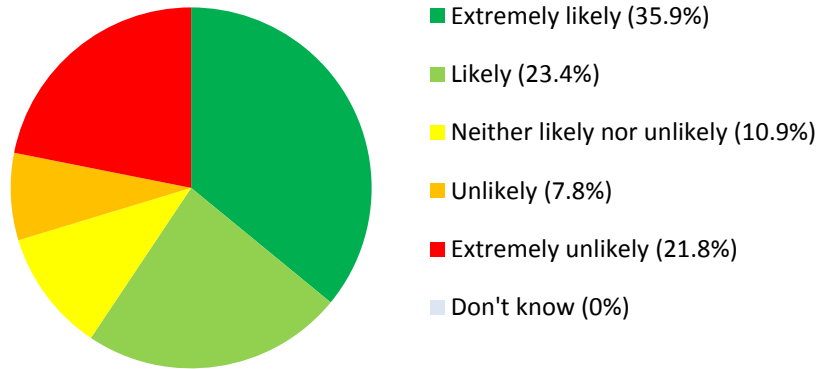
## Responses to Patient Two Minute Survey

Total Responses Collated: 64

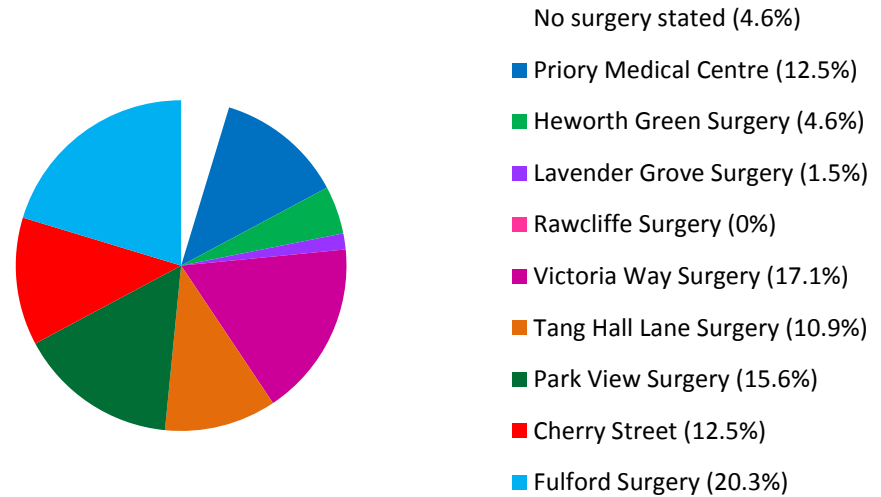
Collation Period: October - December 2018

Next Collation Period: January – March 2019

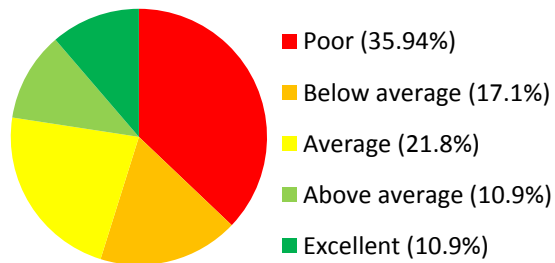
### How likely are you to recommend our GP Practice to friends and family?



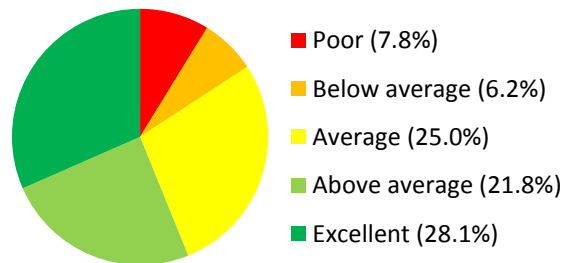
### Usual Surgery



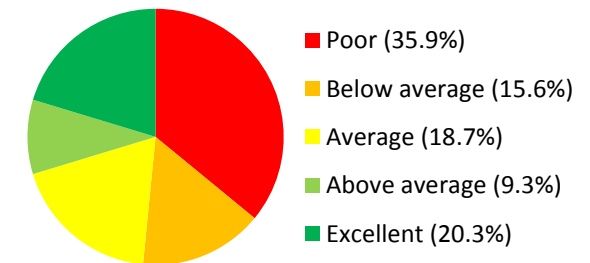
### Getting Through on Telephone

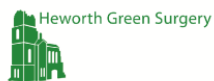


### Handling of Phone Call



### Appointment System in Surgery





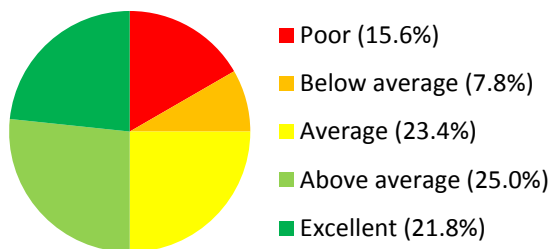
## Responses to Patient Two Minute Survey

Total Responses Collated: 64

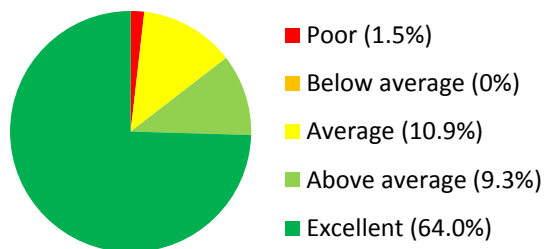
Collation Period: October - December 2018

Next Collation Period: January – March 2019

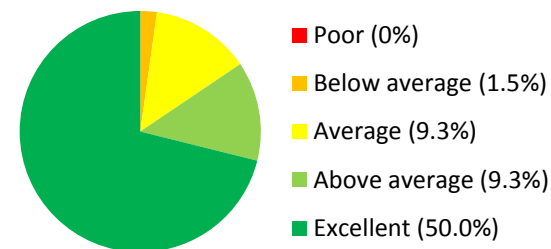
### Waiting time in Surgery



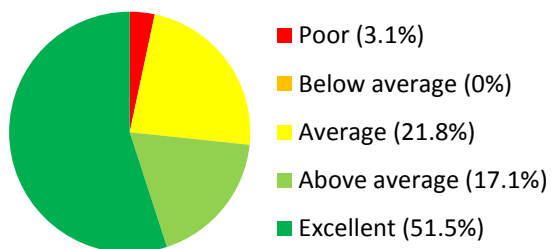
### Manner of Doctor



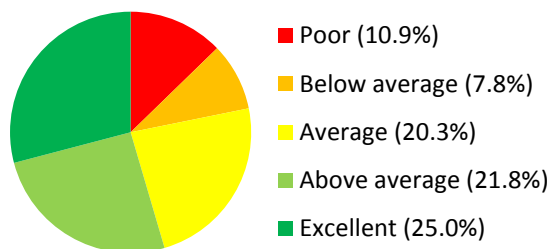
### Manner of Nurse



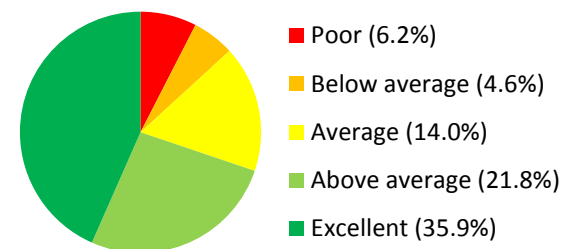
### Manner of Receptionist



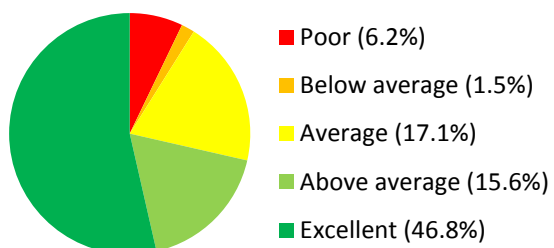
### Appointment Length



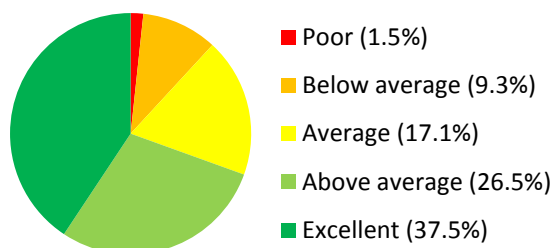
### Explanation by Clinician



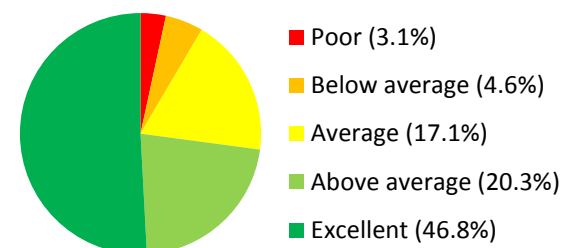
### Confidentiality / Discretion

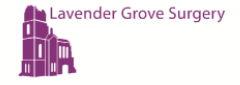
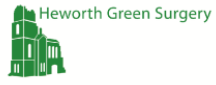


### Surgery Comfort / Facilities



### Cleanliness of Environment





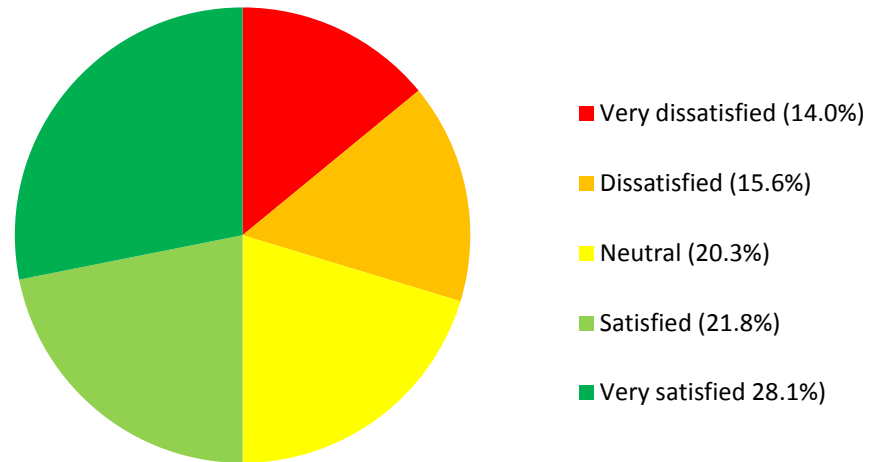
## Responses to Patient Two Minute Survey

Total Responses Collated: 64

Collation Period: October - December 2018

Next Collation Period: January – March 2019

### Overall Opinion of Service



### Age of Respondents

